

**From knowing how
the pieces move...**



...to winning!



Next steps with chess

By David Graham

www.dgchess.com




£5

Contents

Introduction	2
1. The Value of the Pieces	4
2. Chess Notation	6
3. Checkmate	8
4. Stalemate	10
5. Scholar's Mate.....	12
6. Lawnmower Mate	14
7. Pawn Promotion	16
8. Captures	18
9. Castling.....	20
10. Some Rules.....	22
11. The 1, 2, 3 of Chess	24
12. Getting out of Check – The A, B, C of Check	26
13. Capture Choice.....	28
14. Capture Correctly	30
15. Capture After Opponent's Error	32
16. Capture With More Power.....	34
17. Queen Checkmate.....	36
18. Rook Checkmate	38
19. En passant	40
20. The A, B, C, D, E of Defence	42
ANSWERS	44
Summary of Tips	64

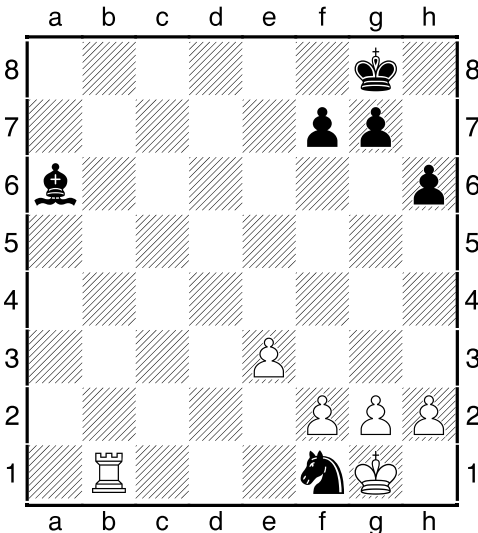
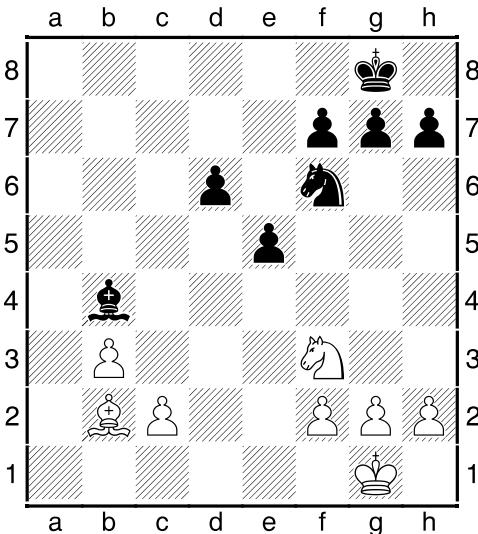
1. The Value of the Pieces

The pawn is given a value of 1 point. The value of the other pieces is expressed in terms of the number of pawns they are worth. When you think about a capture or a swap during the game, remember these values.

Piece	Value	Picture
Queen	9	
Rook	5	
Bishop	3	
Knight	3	
Pawn	1	



As you can see, the Queen is the most valuable piece followed by the Rook and then the Bishops and Knights. Note that the King does not have a value – if you lose him, you’ve lost the game!

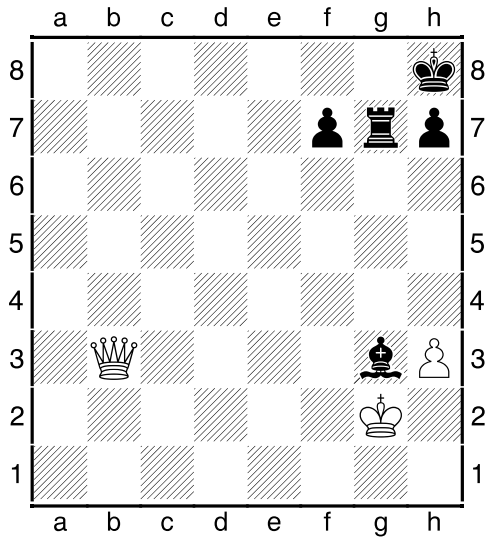
	<p>Example 1a</p> <p>In this position, White should play Rook (5) takes Knight (3).</p> <p>After Black replies Bishop (3) takes Rook, White plays King takes Bishop (3).</p> <p>So, although White loses a Rook worth 5, he gets a Bishop plus Knight, worth 6 in total.</p>
	<p>Example 1b</p> <p>Should White take the pawn?</p> <p>No!</p> <p>After Knight takes Pawn (1), Black plays Pawn takes Knight (3) and even though White can play Bishop takes Pawn (1) he loses out – 3 points lost, only 2 gained.</p> <p>The one White piece lost is of more value than the 2 Black pieces that have been lost.</p> <p>Now try and solve puzzles on the next page.</p>

1. The Value of the Pieces – Puzzles

Puzzle 1.1

Should White take the Bishop?

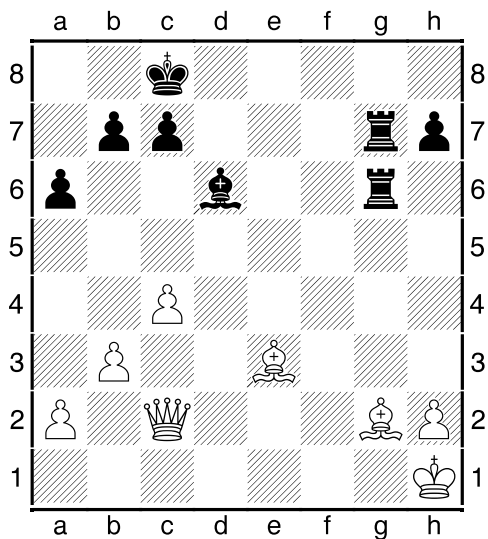
Explain your answer.



Puzzle 1.2

Should Black take the Bishop?

Explain your answer.



Puzzle 1.3

Should White take the pawn which is defended by the Black Rooks?

Explain your answer.

